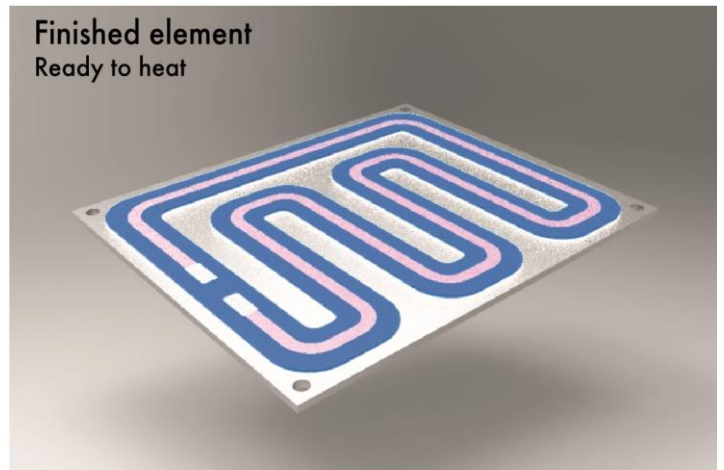
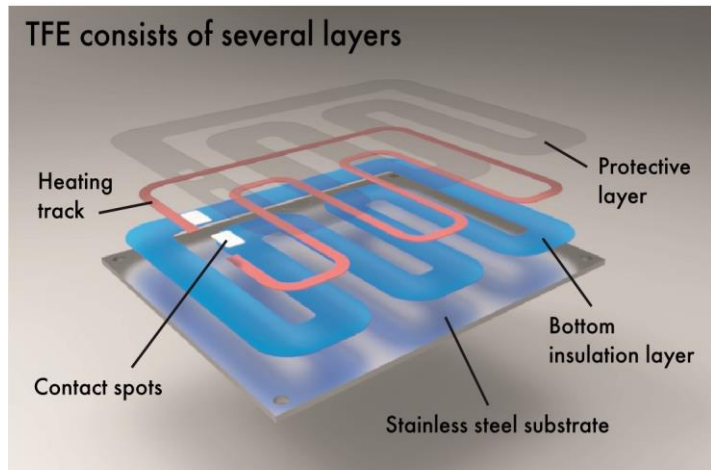
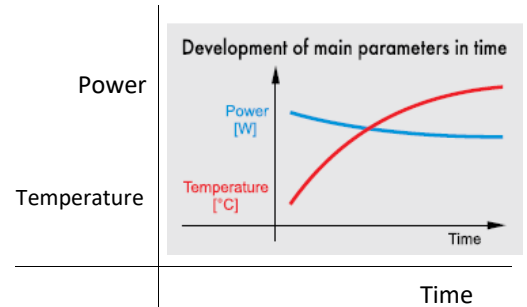


DESCRIPTION

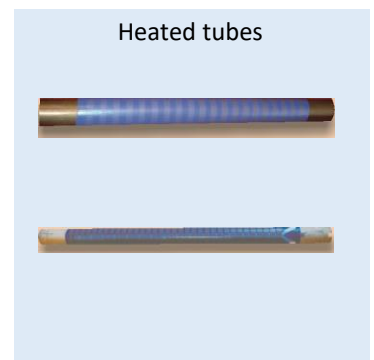
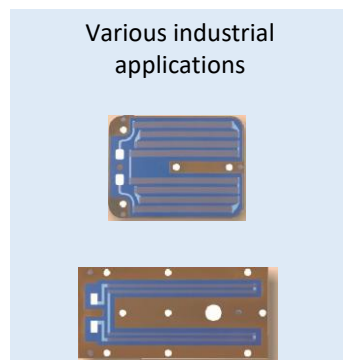
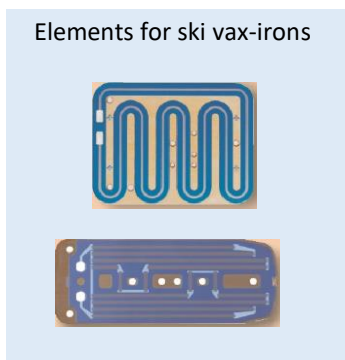


PRODUCTSPECIFICATION

- SURFACE SOURCE OF HEAT
- HIGH PERFORMANCE - power densities UP to 50 W/cm²
- HIGH OPERATING TEMPERATURE - UP to 350 °C, and more
- For direct liquid heating or contact heating of flat surfaces
- Electrical strength UP to several kv
- Mechanically stable, selfsupporting steel substrate
- Simple application of holes, screws, nuts, welds, any flat shape
- Does not absorb humidity
- Temperature profile according to requirements



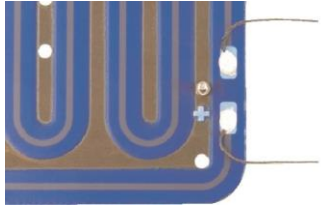
EXAMPLES OF ELEMENTS



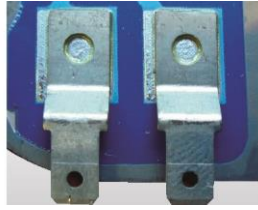
MAIN BENEFITS

- HIGH EFFICIENCY - flat elements ensure better heat transfer to flat wall in contrast to tubular elements
- ENERGY + TIME SAVINGS - thanks to quick temperature rise time
- COST SAVINGS - thanks to easy assembly and disassembly
- Inner surface of heated vessel remains smooth and easily washable
- Very suitable for undirect heating of aggressive liquids
- No need to discharge the vessel content during maintenance at undirect heating
- Heating through sufficiently large area may effectively prevent burning of content to the vessel surface

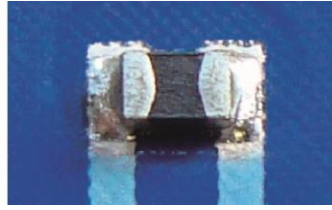
VARIOUS CONNECTIONS, FUSES, SENSORS



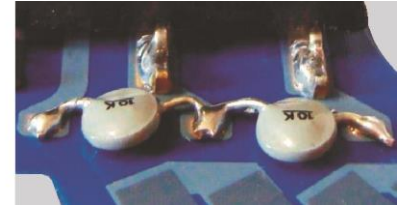
Soldered leads



Soldered flat connectors



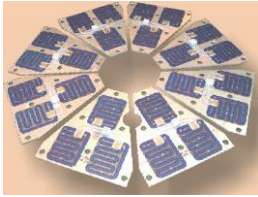
SMD elements



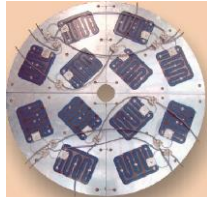
Soldered sensors

EXAMPLES OF REALISED PRODUCTS

Mini-brewery



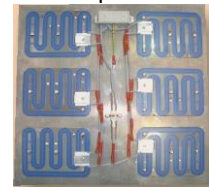
round-bottom vessel



Heating of bottom by heating elements and walls by band heaters



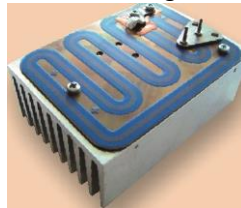
Machine part heating



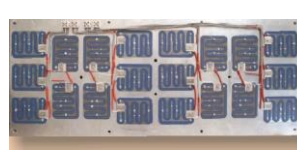
Liquid bath



Air heating



Oil bath



Waxing iron



TYPICAL FIELDS OF APPLICATIONS



Household electric appliances



Medical and laboratory devices



Gastro-facilities



Mini-breweries



Industrial vessels and storage tanks



Automotive